

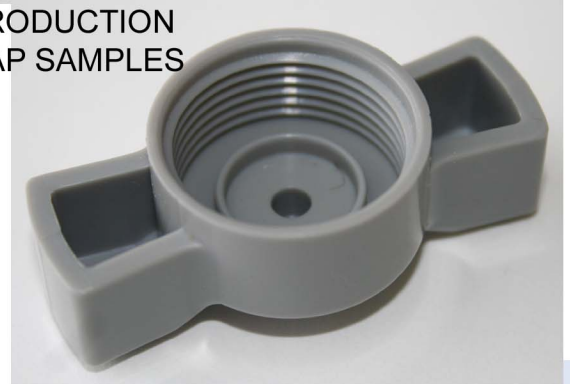
ROBERT DEVANEY

Design Engineer, BSME
650.796.4043 rd@devde.com
PO Box 390044 Mtn View, CA 94039

PRODUCT: Cap for inflation/deflation valve on adventure sport kayak consumer product.
GOAL: Develop functional cast urethane parts for testing and visuals
MATERIAL/PROCESS: RTV/Urethane to simulate PP.
QTY: High volume production
TIMEFRAME: 3 months
PROCESS: Conceptualize> CAD> Prototype> Tooling> Testing.



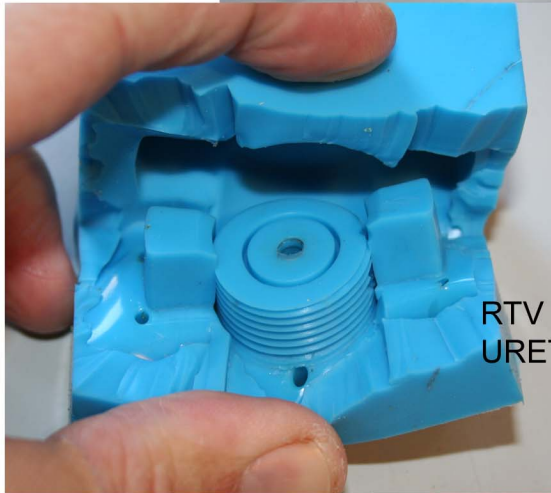
PRODUCTION
CAP SAMPLES



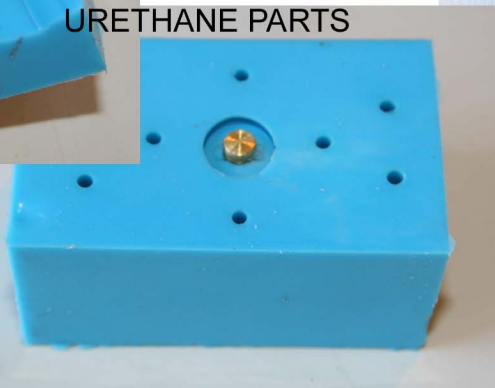
CAST URETHANE CAPS
WITH GASKET FOR SEAL
TESTING



FINAL PARTS



RTV TOOL FOR CASTING
URETHANE PARTS



URETHANE PROTOTYPE CAP
W/ PRODUCTION VALVE SHOWING
DIMENSIONAL ACCURACY



PADDL
SHOUL
DEATH
· GET P
· OBTAI
· ALWAYS
· DRESS
· RESUL
· CHECK
· NEVER
· DO NOT
· BE AWL
· WEATH
· SCOUT
· DO NC
· CONS
· YOU T
· FOLL
· IF AD